

Voluntary Action Waltham Forest

Supporting local voluntary and community action



Aim

Our aim is to build a strong and vibrant voluntary and community sector in Waltham Forest by working with organisations and groups and by becoming a model of good practice.

Vision

By 2015 we want to become an independent, strong and financially sustainable organisation, providing consistently high quality services and able to act as an incisive critic when necessary to protect the ethos and interests of the local voluntary and community sector.

Structure and Governance

Voluntary Action Waltham Forest is a Registered Charity (Number:1031030) and a Company Limited by Guarantee (Number: 2879492).

Voluntary Action is governed by a voluntary Board of Trustees who are elected at the Annual General Meeting.

Any member group that has been a member for more than one year can vote at the AGM and nominate a trustee to the Board.

Objectives

Our objectives, as a Council for Voluntary Service, are to:

Provide specialist expertise, information and support and develop the skills local people need to run successful organisations and groups,

Spread good practice, prevent duplication of effort and support joint working,

Help groups find funding and make effective use of resources,

Promote equality and diversity by fostering a wider understanding of the needs of disadvantaged and under-represented groups,

Make sure policy makers understand the needs of local voluntary organisations and community groups,

Help public bodies engage effectively with local voluntary organisations and community groups,

Provide a forum for local voluntary organisations and community groups,

Encourage more people to volunteer and get involved in voluntary and community action.



Kreative Culture Klub's Production of 'Caribbean Rush'.

Photograph by Mark Burton



Contents

Aim, Vision and Objectives	2
Structure and Governance	2
Chair of Trustees' Report	4
Trustees	5
What we do... in Numbers	6
Chief Officer's Report	7
Developing community organisations that provide local services	8
Helping local groups to raise funds and supporting them to provide services	10
Helping to raise standards and developing the local workforce	12
Providing information and helping groups to become better connected	14
Strengthening networks	15
Summarised Financial Statement	16
Our Members in 2010-2011	18
Our Funders Logos	18
Staff and volunteers during 2010-2011	19
Join Us	20

Picture above:

Waltham Forest Carers Association Therapeutic Session for Carers

Front Cover top row:

The Limes Community and Children's Centre

Front Cover bottom row:

William Morris Daycare Association

Photographs by Katherine Green

Chair of Trustees' Report



Valentin Yombo Djema
Chair of Trustees

Back to Basics

Voluntary Action Waltham Forest (VAWF) is a Council for Voluntary Service (CVS) and according to NAVCA (National Association for Voluntary and Community Action) the 'traditional' five core functions of a CVS are: Services and support, Liaison, Representation, Development Work and Strategic partnerships.

Services and support

CVSs promote the effectiveness of local voluntary and community groups by providing them with a range of services.

These may include access

to basic facilities, such as meeting rooms, photocopiers and ICT equipment or more involved services such as community accountancy and employment advice.

CVSs also support local groups through regular newsletters, training, funding advice and specialist services.

Liaison

As a focal point for the local voluntary and community sector, CVSs encourage networking between individuals and groups within the sector, and between local groups and the statutory and private sectors. This allows local groups to learn from one another, establish contacts and work more effectively. CVSs also help different communities to organise their own networking activity.

Representation

With government encouraging involvement of voluntary and community groups in shaping and delivering services, CVSs enable the views of local groups to be represented. For example, many CVSs run voluntary and community sector forums which provide an opportunity for local groups to put forward their views on national and local policies.

Development work

Over the years, the local voluntary and community sector has pioneered some of the essential public services that we now take for granted. Child protection and care for the elderly, for example, had their origins in, and were developed by, the voluntary sector.

This tradition has continued into the 21st century, and today CVSs take the lead in identifying gaps in service provision and work with groups to develop new and innovative services to meet these needs.

Strategic partnerships

CVSs work in partnership with local government and other statutory agencies to shape the delivery of services. CVSs play a key role in empowering local groups to take part in partnerships and are directly involved in a wide range of regeneration, neighbourhood renewal, health and social care, learning and other government initiatives.

Strategic partnerships may be sub-regional, district wide or neighbourhood. They may cover several issues or have a particular focus.



Far Left:
Voluntary Action Training

Near Left:
Children and Young People's
Providers (CHYPPS) Conference on
a Safer Workforce in April 2010

Continued

I am pleased to say that VAWF is fulfilling most of the five core functions of a CVS despite the challenging socio-economic environment.

Today more than yesterday the local community organisation will need an infrastructure organisation to support and represent them at local and national level.

Therefore, everything is put in place by VAWF's team to fulfil the five core functions.

Starting by regular and thorough board meetings to plan, review and evaluate the strategic vision of the organisation and on the other hand the work of our experienced staff and volunteers who do not rest

in improving the quality and performance of VAWF.

This year again, it was a privilege to work with this group. I suppose the question someone can ask is what achievement is, do you have any success stories to back up your claims?

Of course yes, we do have an impact outcome. To take just one example amongst many, the Fundraising service has supported groups to raise nearly £ 1,000,000 in Waltham Forest.

When we said Fundraising service in fact we need to understand that other services are involved directly or indirectly. Successful application forms require the applicant to demonstrate that they have in place good

governance, financial report and robust policies in place.

So, other services such as organisational development, accounting and training services are also involved in supporting groups for fundraising making it a comprehensive and holistic approach.

VAWF services are and will be more needed in the near future because of the current economic restriction.

I would like to thank the colleagues' trustees, staff and volunteers for their passion for the voluntary sector. I would also seize this opportunity to acknowledge our partners and funders for their on-going support to our work.

Voluntary Action Trustees 2010 - 2011



pictured above (from left):

Kay Watmough, Co-optee. Waltham Forest Carers Association

Sidney Milambo ACMA, BAcc. (*Treasurer*)
Co-optee. Worker's Educational Association

David Floyd,
Nominated by Social Spider

Tim Bennett-Goodman, Co-optee.
Member of the National LGBT Consortium

Valentin Yombo Djema (*Chair*)
Nominated by African Foundation Stone

Dr Mel Evans, Co-optee.
Health & Social Sciences, Middlesex University

Steve Williams, Nominated by
Friends of St Marys Nature Reserve

Mohammed N Khan,
Nominated by 50+ Elderly Asian Club

Neil Collins,
Nominated by East London Harmony

Dr Jasmine Taylor (*Vice-Chair*),
Nominated by Nexus Supplementary School

Brian Kapp (not pictured),
Nominated by Waltham Forest Sports Council

What we do ... in Numbers

Organisational Development

Held **484** sessions with **161** organisations helping them to become stronger

Ran **48** training courses and trained **295** learners

Gave support to **88** organisations working with Children and Young People who are seeking the Certificate of Minimum Standards (since the CMS project started in September 2010).

Held **24** sessions with **10** groups who are seeking quality marks

Community Accountancy

Strengthened financial management of **102** groups in **201** sessions

Ran **19** financial courses, training **112** learners

Fundraising Support

Gave **60** groups fundraising advice in **180** sessions

Helped groups submit **104** fundraising applications.

Our groups successfully raised **£976,133**

Volunteering Development (from June 2010)

Answered **698** queries about volunteering and interviewed **242** volunteers

Placed **61** volunteers in new volunteering opportunities

Information and Communications

Sent **12** news e-bulletins and **6** postal mail outs to **600+** addresses (including quarterly printed newsletters to **300+** addresses).

Set up mini-websites for **15** community organisations (from September 2010)

Networks

Facilitated **12** network events

Chief Officer's Report



Enrique Saenz-de-Sicilia
Chief Executive Officer

Testing Times

Like most voluntary and community sector organisation in the UK, 2010 was for Voluntary Action a period that put us to the test. A period in which we had to adapt quickly to a dramatic transformation of the political and economic landscape at a national level and from which the voluntary and community sector would not escape.

Following the outcome of the general election, a

priority was for us to keep our members, users and partners informed of a completely new policy framework - trying to make some sense for us and them of the messages surrounding the so called Big Society.

Those changes at a national level were compounded locally in 2010 by two events worth highlighting here. Firstly, the interest from Waltham Forest

Council to understand, plan and act decisively to sustain and develop a thriving third sector in Waltham Forest. We worked assiduously during the period to influence the review of the authority's approach to the sector across the board.

As the review continues so will our endeavours. Watch this space!

Secondly, also from the hand of the local Council, the completion

and start of rounds that commissioned services from voluntary and community organisations.

Against the severe squeeze in the public finances, we worked with many of our users and members on their responses to tenders in the understanding that we would have to work even harder, which we did and continue to do so, with those

either loosing out from the contest or which priorities were left out of focus.

It has been and will continue to be our concern as

it is of our members, to ensure that grants (big and small) continue to be available locally, and that the inflow of funds into local voluntary and community groups from external sources is not only sustained but increased. In 2010-11, as accounted for in this report, local organisations attracted with our support almost £1,000,000. In the current climate no one will doubt this

will be challenging.

We secured a commission from Waltham Forest Council to continue the offer of infrastructure services to local groups, and brought in-house a volunteering service that

brokers the needs of individuals that want to volunteer and organisations wanting to involve them. Equally, we started to

support organisations servicing families with children under five in their labours to attain the Certificate of Minimum Standards.

Internally we have had to restructure and adapt to a new economic environment; we did so and secured the integrity of most of our services while embarked and made considerable progress innovating our IT infrastructure, our communications and our media.

We continue to sustain the facilitation of a number of voluntary and community sector Networks, were instrumental in voluntary and community representatives participating in decision making bodies and continued successfully in our role as host for the Local Involvement Network (LINK).

This report is a testimony to the input and the difference made by our staff, Board of Trustees and Directors, our volunteers, not least our funders.

"It will continue to be our concern, as it is of our members, to ensure that grants (big and small) continue to be available locally."

"We had to adapt quickly to a dramatic transformation of the political and economic landscape."

Developing community organisations...



Helping to Set Up and Develop Groups

We help people with ideas to set up community organisations and we help to improve the way community organisations work, making them stronger.

We provide information and one-to-one advice on setting up as a registered organisation including support with what type of organisation to register as, and how to develop policies such as child protection, health and safety, and equal opportunities.



Fundraising Service

We provide one-to-one fundraising advice and support, including how to:

- identify relevant funding opportunities,
- make your organisation more attractive to funders,
- fill in application forms and to prepare for interviews.



Meet the Funder Sessions

At our 'Meet the Funder' sessions, funders explain the application process, and community groups can put their questions directly to them.

In 2010 - 2011 we held Meet the Funder sessions with:

- LBWF Conditional Grants
- Big Lottery Awards for All
- LBWF Youth Activities Commissioning
- Transformers
- Trust For London
- Comic Relief
- Help a London Child
- Grassroots Grants

Pictured above:

Meet the Funder session with the LBWF Youth Activities Commissioning Team



Contact our Funding Advice Officer, Mutmahim Roaf, for support.

Call 0208 521 0377 ext. 224 or email mutmahim@voluntaryaction-wf.org.uk

...that provide local services

Community Accountancy Support

Our community accountant, Alex Davies, provides group training and one-to-one support for those who wish to set up or improve the accounting system for their organisation. He aims to:

- Increase the capacity of groups to maintain their own finances,
- Help small and medium groups to meet funders and legal requirements,
- Improve networking and promote best practice amongst financial workers and the treasurer.

Voluntary Action provides free financial health checks and information on changes in accounting requirements.

Comments from our service users

Somali Women's Association

"We provide advice services and supplementary education in English, Maths and Science for children and young people.

Alex helped us to update our accounts and record-keeping. He was a good trainer, very helpful."

Marium Adan, Somali Women's Association
William Morris Community Centre

Waltham Forest Blind Association

"We provide advice and support group for people in Waltham Forest who are blind or partly sighted.

Our coordinator attended free training sessions with Alex, Voluntary Action's community accountant. Alex doesn't do the accounts for us, we have our own accountant, but he has helped us and given us support when we need it. We got very helpful advice."

Jayesh Acharya, Chair
WF Blind Association Community Place,
806 Leyton High Rd E10 6AE
0208 556 0355 www.wf-ba.co.uk



Waltham Forest Blind Association Event
Photographed by Mark Burton

"We got very helpful advice"

Jayesh Acharya
Waltham Forest Blind Association



Contact our Community Accountant,
Alex Davies, on 0208 521 0377 ext. 233
or at: alex@voluntaryaction-wf.org.uk

Helping local groups to raise funds...



Pictured above:

Kreative Culture Klub's performance of 'Caribbean Rush'.

Photo by Mark Burton

Helping groups to apply for grants

Kreative Kulture Club

Kreative Culture Klub (KCK) in Leyton exists to advance their education of young people of African & African Caribbean backgrounds through creative arts to develop self confidence and esteem. KCK has attracted members from various cultures reflecting the rich diversity in Waltham Forest.

email:kck_enq@hotmail.com

We helped KCK raise £29,138 from Transformers and £8,000 from the Youth Offer.

Nabadda Football Club and Culture

Nabadda Football Club and Culture in Leyton

Nabadda aims to enhance the quality of life and well being of local residents (particularly, but not exclusively, Somalis) through football.

We helped Nabadda raise £5,000 from Grassroot Grants.

Pakistani Women's Welfare Association,

Pakistani Women's Welfare Association in Walthamstow provides a social and support group for women from the Pakistani community, including older people and those who are socially isolated.

Telephone: 020 8928 0861

We helped Pakistani Women's Welfare Association raise £9,980 from Awards For All.

Waltham Forest Bi-Lingual Group

Waltham Forest Bilingual Group aims to support families with bilingual children.

www.wfbilingual.org.uk

We helped Waltham Forest Bi-Lingual Group raise £4,909 from Awards for All

...and supporting them to provide services

Pictured right:

William Morris Daycare Association



Photo by Katherine Green



Ann Mitchell

William Morris Day
Care Association

“Without Voluntary Action we wouldn’t be here today.”

Helping with commissioning

“We are a registered charity that provides multicultural day care services for the over 55s. It is like one big family here.

Without Voluntary Action we wouldn’t be here today. The fundraising services has been a valuable source of feedback and support for us.”

William Morris Daycare Association
124 Erskine Road London E17 6SA
Telephone: 0208 521 3433

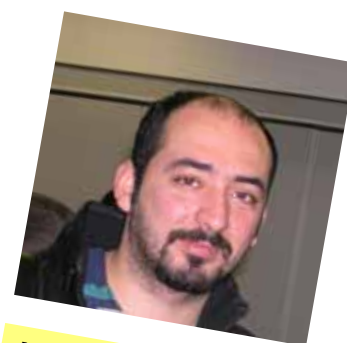
Helping to build consortia to bid for contracts

“The Asian Centre provides and facilitate development and support services for Asian communities living in Waltham Forest. We also provide services and space for all local residents.”

Voluntary Action Waltham Forest acted very quickly in bringing us together (to form a consortia) with other community centres and we were successful in our bid for a contract with Waltham Forest Council.

Mutmahim was very helpful during the commissioning process. He offered us a lot of support. He supported us in checking the application forms and advising how to interpret ourselves. And how to put our answers in order to enable us to gain maximum scoring from each question.”

The Asian Centre,
18a Orford Road, Walthamstow, E17 9LN
020 8223 0707 www.theasiancentrewf.org.uk



Musa Ballikaya

Waltham Forest
Asian Centre

“Voluntary Action acted very quickly in bringing us together”



Contact our Funding Advice Officer, Mutmahim Roaf, for support.
Call 0208 521 0377 ext. 224 or email mutmahim@voluntaryaction-wf.org.uk

Helping to raise standards...



Stephanie Heester

Carville Day Nursey
Walthamstow

“They were always at the end of a phone and they responded to our emails and calls really quickly.”

Helped us to gain a Certificate of Minimum Standards

“It feels really good to have achieved a CMS for our nursery. It’s a real sense of achievement. There is a lot to do and so we feel proud to be one of the first nurseries to achieve CMS.

CMS shows parents and clients that we are a well run setting. As awareness of it increases it will become more and more recognised and we felt it would be good to have against our name.

The support Voluntary Action gave us was really good. They were always at the end of a phone and they responded to our emails and calls really quickly which meant the process wasn’t held up waiting for a response”

*Carville Day Nursery 43a West Avenue Rd, Walthamstow E17 9SF
Telephone: 020 8521 7612*



Nicole, Maria and Phil of Voluntary Action’s CMS team support children’s service providers who are trying to achieve a CMS. Contact the team on 020 8521 0377 x 223



Shenaz Mirza

Waltham Forest
Carers Association

“Someone was there for me when I didn’t know what to do. “

Helped us to gain a Quality Mark

Waltham Forest Carers Association provides support and advice to carers and during 2010-2011 they went through the process of achieving the PQASSO quality mark.

“We did it firstly, to make sure the way we were working was as good as it could be. Secondly for our carers, so that anyone wanting to use our services would have trust in us because they knew that we have been quality checked. And thirdly, because it would serve as a benchmark for external funders, so they could have confidence in us, knowing we had undergone some rigorous testing.

Tony at Voluntary Action was like a buddy, someone who was there for me when I didn’t know what to do and the financial support Voluntary Action gave us really helped. Without their help, I don’t think WFCA would have been as confident or as encouraged to go through the process.”

Waltham Forest Carers Association, St Andrews Centre, 8 Church Road, Walthamstow E17 6AR, Telephone: 020 8531 9652



Anthony Fincham is Voluntary Action’s Business Development Officer. He supports organisations who would like to achieve a quality mark. Call Tony on 0208 5210377 x 236 or email: anthony.fincham@voluntaryaction-wf.org.uk



...and developing the local workforce

Helped us to find volunteers for our project

“Carefree kids provides long term therapeutic play services for local primary school aged children, and parents, who need support because they face extra difficulties such as issues such as a bereavement in the family, or who have special needs or who has a sibling with special needs, or who have experience abuse or domestic violence.

The students and volunteers who come to us to work with us get guidance and training from us. Sometimes people get on a course or get a job as a result of working with us. Voluntary Action has helped us find volunteers for the work we do.”

Carefree Kids, 15 Matcham Road, London E11 3LE
Telephone: 0208 558 7799 carefree.kids@btinternet.com
www.carefreekids.org



Ros Kane

Carefree Kids

“Voluntary Action has helped us find volunteers for the work we do.”



Diana Leary is our part-time Volunteering Development Officer. She can help find volunteers for your projects. Contact Diana on 0208 521 0377 239 or email: diana.leary@voluntaryaction-wf.org.uk

Helped us to train our workforce

“Waltham Forest Haven provides counselling for adult survivors of all forms of sexual abuse, incest, rape and torture, and for mothers of sexually abused children.

I went on a course called Policies, Procedures and Practice. It was good. Policies are very important and I found the course really helpful. It is good to take time out to do these courses and to hear the experiences of other organisations. It makes you realise that you do need to keep revisiting your policies.”

Waltham Forest Haven,
Community Place, 806 High Road Leyton E10 6AE
Telephone: 0208 539 4157 Website: www.wfhaven.org.uk



Chris Casey

Waltham Forest Haven

“I found the course really helpful”



Voluntary Action’s training courses can be found on our website or you can call our administrator, Sangita Zeline for details and bookings. Contact Sangita on 0208 521 0377 ext. 222 or email: sangita@voluntaryaction-wf.org.uk

Providing information...



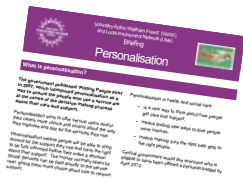
Printed Newsletter

We produce a printed newsletter and e-bulletins

We produce a quarterly printed newsletter which is posted to our members and partners, and monthly e-bulletins which are sent via email to our contact list of over 700 individuals and organisations who are interested in voluntary and community action in Waltham Forest.

We provide news about local events as well as updates on what is going on nationally. Members are able to use our email mailing to advertise their news and services for free and we offer low cost inserts and adverts in our postal mail outs.

We highlight the work of local organisations, for example, we featured the work of: Branches, Organiclea, Papworth Trust, Marian Mission, Waltham Forest Carers Association, Shakir Youth Trust and Red Onion.



Briefing on Personalisation 2010



Sarah Kinson is our Information Officer. If you would like your group's news, services or events highlighted please contact Sarah on 0208 521 0377 ext. 237 or sarah.kinson@voluntaryaction-wf.org.uk

..and helping groups to become better connected



Our new website launched in September 2010
www.voluntaryaction.net

We help community organisations get on the web

If you are involved in a local voluntary or community organisation we will help you set up your own mini-website and give you training on how to use it - so get better connected today!

Building a profile of the local Voluntary Sector

We are building a database of the sector that is going to help demonstrate our value, raise funds and investment and prove need in Waltham Forest, but we need your help!

Please register your organisation at:
www.voluntaryaction.net/yoursector



Mini - websites
on www.voluntaryaction.net



Cris Thompson is our Communications Officer and he can help you get better connected using the internet. Contact Cris if you would like more information about getting a free mini-website on 0208 521 0377 ext. 225 or at cris@voluntaryaction-wf.org.uk



The Children and Young People's Provider Services Network (known as CHYPPS)

CHYPPS has been running for four years and has become the recognised platform for consultation between the CYP VCS and the LBWF children and young people's department.

CHYPPS' inclusion in strategic bodies' boards and partnerships ensures a voice at the top table for the needs and aspirations of the sector – ultimately leading to a better integrated service leading to far better outcomes for children, young people and their families in Waltham Forest.

CHYPPS Forums are open to all voluntary, independent, private and community sector organisations (PVI) working with children and young people in Waltham Forest as well as the young people that are part of these organisations and

their families.

The Steering Group continued to meet monthly to ensure that the Network was kept well informed – truly represented – and were given the opportunity to voice their successes as well as their concerns.

For example at the forum in March 2011 Bethan West presented the Gangs Strategy and how the PVI sector could get involved. And there was a presentation by Alfred Donkor and the Waltham Forest team on Youth Activities Funding.

We had a membership drive at the start of informal collaboration with the Certificate of Minimum Standard (CMS) Team leading to a rise in membership from 140 to 162 members on the email contacts list and a rise from 120 to 141 full contact details who we can reach through postal mailings and telephone.

70% of these are from hard

to reach groups - a rise from 60% in the previous year. A more formal collaboration with the CMS team is planned for 2011 – 12.

Steering group members continued to serve on many Boards and Partnerships including the Children Trust Board, the Children Safeguarding Board and the CMS Steering Group and Panel.

The Network was very ably Chaired by Matt Perry of Worth Unlimited and the Steering Group attended regularly by Matt as well as Andree Selner, Leyton Orient Community Sports; Bimpe North, Learn & Play; Nick Mason, Forest YMCA; Penny Gosai and Gaye Studman, WF Mencap; Trevor Duberry, Tottenham Hotspur Community Sports; Wendy Fields, Lloyd Park Children's Centre; Enrique Saenz, VAWF; with Nicole Walker and Barbara Bishop in attendance as the Network officers.

Voluntary Sector Forum

The VSF meets at Waltham Forest Town Hall and all members of local voluntary sector are welcome to attend.

It is a chance to meet Councillors, council officers and other local organisations.

Advice Providers Forum

This forum is for local organisations that provide advice. It meets bi-monthly in venues in Waltham Forest.

Local Involvement Network (LINK)

This network is for users and providers of health and social care service. A separate report on the LINK's activities during 2010-11 is available. Please contact Luke Buffery on 0208 521 0377 ext. 234 or see: www.wflink.org.uk



Contact Barbara Bishop for more details.
Call 0208 521 0377 ext. 221 or email barbara@voluntaryaction-wf.org.uk



Summarised Financial Statements 2010-2011

	Unrestricted funds £	Restricted funds £	Total funds 2011 £	Total funds 2010 £
Income and expenditure				
Incoming resources				
Incoming resources from generated funds				
. Interest receivable	236	—	236	204
Incoming resources from charitable activities				
. Membership subscriptions and fees receivable	6,669	5,855	12,524	5,598
. Promoting effective community and voluntary sector activity in the London Borough of Waltham Forest	384,710	194,442	579,152	471,289
Other incoming resources	1,226	—	1,226	3,585
Total incoming resources	392,841	200,297	593,138	480,676
Resources expended				
Charitable activities				
. Promoting effective community and voluntary sector activity in the London Borough of Waltham Forest	381,663	202,203	583,866	470,640
Governance costs	4,642	2,084	6,726	6,631
Total resources expended	386,305	204,287	590,592	477,271
Net movement in funds before transfers				
	6,536	(3,990)	2,546	3,405
Transfers between funds				
	(299)	299	—	—
Net movement in funds ie net income (expenditure)				
	6,237	(3,691)	2,546	3,405
Balances brought forward at 1 April 2010				
	97,762	41,983	139,745	136,340
Balances carried forward at 31 March 2011				
	103,999	38,292	142,291	139,745

All of the charity's activities derived from continuing operations during the above two financial periods.

The charity has no recognised gains and losses other than those shown above and therefore no separate statement of total recognised gains and losses has been presented.

	2011 £	2011 £	2010 £	2010 £
Fixed assets				
Tangible assets		2,614		2,480
Current assets				
Debtors	69,156		27,505	
Cash at bank and in hand	78,769		135,712	
	147,925		163,217	
Creditors: amounts falling due within one year	(8,248)		(25,952)	
Net current assets		139,677		137,265
Total net assets		142,291		139,745
Represented by:				
Funds and reserves				
Restricted funds		38,292		41,983
Unrestricted funds				
. General funds		41,760		32,641
. Designated funds		62,239		65,121
		142,291		139,745

Directors' Statement

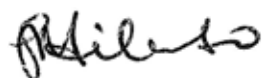
The Directors confirm that these summarised financial statements are a summary of information from the full accounts which were approved by the Board of Directors on the 22nd September 2011.

A copy of the full accounts of the charitable company, upon which the auditors have reported without qualification, will be delivered to the Charity Commission. These summarised accounts may not contain sufficient information to allow for a full understanding of the financial affairs of Voluntary Action Waltham Forest.

Further information and the full accounts are available by contacting the Chief Executive Officer at:
Voluntary Action Waltham Forest,
Upper Ground Floor, Churchill Business Centre,
6 Church Hill,
Walthamstow,
London E17 3RY

Telephone: 0208 521 0377

Signed on behalf of the board of directors



Sidney Milambo,
Honorary Treasurer

Auditors' Statement to the members of Voluntary Action Waltham Forest

We have examined the summarised financial statements set out on these pages.

Respective responsibilities of directors and auditors

The directors, who are also the trustees of Voluntary Action Waltham Forest for the purposes of charity law, are responsible for preparing the summarised financial statements in accordance with applicable United Kingdom law .

Our responsibility is to report to you our opinion on the consistency of the summarised financial statements with the full annual financial statements, and their compliance with the relevant requirements of section 427 of the Companies Act 2006 and the regulations made thereunder.

Basis of opinion

We conducted our work in accordance with Bulletin 2008/3 issued by the Auditing Practices Board. Our report on the charitable company's full annual financial statements describes the basis of our opinion on those financial statements.

Opinion

In our opinion the summarised financial statements are consistent with the full financial statements and the Board of Directors' report of Voluntary Action Waltham Forest for the year ended 31 March 2011 and comply with the applicable requirements of section 427 of the Companies Act 2006, and the regulations made thereunder.

Buzzacott LLP,
Statutory Auditors,
130, Wood Street
London EC2V 6DL

Our Members 2010 - 2011

Advanced Members

African Heritage and Education Centre
 Asian Centre
 British Afghan Women's Society
 Crest Waltham Forest
 Elmago Concern Centre
 Fresh Start Supplementary School
 Hornbeam Env. Group
 London African Healthcare Project
 Mauritian Islamic Welfare Assoc.
 Multicultural Asian Society
 Positive East
 Preset Charitable Trust
 Sansom & Acacia Management Services Ltd
 Social Spider CIC
 The L H Pandzou Children's Foundation
 The Limes Community & Childrens Centre
 The Qalb Centre Services Ltd
 Village Pre-school
 Vital Education Enterprise & Training Ltd
 WF Asian Seniors' Club
 WF Carers Assoc
 WF Community Transport
 WF Crossroads- Caring for Carers
 WF Disability Resource Centre
 WF Gujarati Mandal
 Young & Talented
 Ignition Education

Standard members

Africa Foundation Stone
 African and Afro Caribbean Support Network
 African and Caribbean Disablement Assoc.
 African Caribbean Elders Assoc.
 African Centre for Mining and Development
 Ahmaddiya Muslim Assoc.
 Angolan Refugee Project
 Arabic Speaking Womens Assoc.
 Asia Link Network
 Asian Mela
 Asian Muslim Mothers Assoc.
 Aspects of Waltham Forest

Barawa Al Rahma Somali Islamic Centre
 Basantu Outreach Project
 Black Peoples Mental Health Assoc.
 Chaos Theory
 Chief Cornerstone Community Org.
 Chingford Hall Children's Centre
 Choices Crisis Pregnancy Counselling
 Collee Amateur Operatic Society
 Community Based Housing Assoc.
 Community of Malian Refugees
 Disability Action WF
 E17 Art Trail
 E17 Designers
 E17 Puppet Project
 East London Community Law Service
 East London Harmony Books
 Education for All People
 Emmanuel Youth Club
 Empowering Projects
 Eton Manor Athletics Club
 Every Voice Matters
 Fifty Plus Elderly Asian Club
 Forest Community Assoc.
 Forest Philharmonic Society
 Forest South Resident Assoc.
 Fountain of Peace Ministries
 Global Amity
 Graces and Joyce Specialist Services
 Greenleaf Trust
 Groundwork London
 Health and Happiness
 Home Energy Efficiency Training Ltd
 ICON Theatre
 (Alliance of) Kanlungan Filipino Consortium
 KNI Foundation
 Kreative Culture Klub
 Kreative Vision
 Leyton Green Football Club
 Leytonstone Muslim Community Centre
 Leytonstone Supplementary School
 Leytonstone Youth Café Community Initiative
 Masquerade 2000
 McGuffin Film Society
 MRC Le Chandelier
 Nabadda Football Club and Culture

Nigerian Community in WF
 NTA Community Projects
 Pakistan Forum
 Pakistani Womens Welfare Assoc.
 Papworth Trust Home Solutions
 Phoenix Counselling Services
 POhWER
 Red Onion Community
 Roma Support Group
 Safe for All CIC
 Senior Citizen Asian Group
 Service User Training and Reserach
 Shakir Youth Trust (WF)
 Shapeshifter Productions Ltd
 Shopmobility WF
 Sikh Community Care project
 Solomon Music Academy
 Somali -Bravanese Women's Org
 Southern Africa Aids Foundation
 Sport Waltham Forest
 The Amir Khusru Society (UK)
 The Community Pool CIC
 The Proactive Foundation Ltd
 The Seniors
 TIPS 4 Choices
 Veronruth for the Elderly (UK) Ltd.
 Wadham FC
 WF Arts in Education Network
 WF Asian Arts Council
 WF Blind Association
 WF Cameroonian & Friends
 WF Congolese Association Network
 WF Cycling Campaign
 WF Dyslexia Association
 WF Haven
 WF Parents Forum
 WF Somali Welfare & Cultural
 WF Thuso in South Africa
 Walthamstow and Chingford Almshouse Charity
 Walthamstow CAB
 Walthamstow Creche
 Walthamstow Toy Library
 WF Afghan Community
 William Morris Community Centre
 Womens Resource Centre
 Writers and Actors Forum
 X7eaven Community

Our Funders in 2010 -2011



FUNDED

Our Staff and Volunteers

Voluntary Action Staff

Chief Executive Officer
Enrique Saenz-de-Sicilia

General Manager and CHYPPS Coordinator
Barbara Bishop

Administrator (part-time)
Sangita Zeline

Finance and Community Accountancy Officer
Alex Davies

Business Development Officer
Anthony Fincham

Funding Advice Officer (part-time)
Mutmahim Roaf

Volunteering Development Officer (part-time)
Diana Leary (from June 2010)

Information Officer (part-time)
Sarah Kinson

Communications Officer (part-time)
Cris Thompson

Certificate of Minimum Standards (CMS) Support Team

CMS Project Co-ordinator
Nicole Walker

CMS Development Officer (part-time)
Maria Gonzalez (from December 2011)

CMS Development Officer (part-time)
Phil Miller (from January 2011)

Our Volunteers 2010- 2011

Alex Lock, Kay Winn-Cannon, Huma Majid,
Michael Persaud, Philip Hemmings, Lizhi Zhou
Coleman, Ronald Riviere, Claudine James and
Natalie Paul.

Link Volunteers:
Samera Jamil and Joanne Graves.



Pictured above and below:
Voluntary Action Staff at our office in Walthamstow

Local Involvement Network (LINK) (Hosted by Voluntary Action)

LINK Co-ordinator
Adessa M'baye

LINK Administrator (part-time)
Sangita Zeline

LINK Outreach Officer (part-time)
Patricia Donkor (from Dec 2010)

LINK Information and Communications Officer
(part-time) Luke Buffery (from Dec 2010)

Goodbyes in 2011

Marjorie Price (Training Officer until Mar 2010)

Karen Woolcott and Gemma Cossins part-time
CMS Development Officers (until Dec 2010).

LINK Information and Outreach Officer
Louise Mitchell (until Aug 2010)



Join Us

Waltham Forest has a thriving third sector, but we all face challenges in the coming years.

Together we are stronger, so join us.



Benefits of membership

What we can offer you:

- Help to set up as a registered organisation.
- One-to-one fundraising support
- Support to develop your policies, such as health and safety and equal opportunities.
- Local, low - cost training for your staff, trustees and volunteers.
- Help with setting up, or updating a system for your finances.
- Help to set up your own free mini-website.
- Opportunities to network with other local organisations.
- Guidance with achieving a recognised quality standard mark for your organisation.
- Low cost meeting space
- Free hire of equipment
- Monthly email bulletins containing news and events of interest to local organisations
- Quarterly printed newsletters and six postal mail out a year.
- Join any time - a year's membership lasts 12 months from the date of joining.

Cost of membership

Your organisation's Income Per Year

Less than £10,000	free!	£75,001 - £100,000	£75.00
£10,000- £20,000	£15.00	Income over £100,000	£100.00
£20,001- £50,000	£40.00		
£50,001 - £75,000	£60.00	Affiliation	£75.00

How to join

Contact Sangita Zeline on 0208 521 0377 ext. 222 or at sangita@voluntaryaction-wf.org.uk

Or see our website: www.voluntaryaction.net/about/join-us

Registered office

Voluntary Action Waltham Forest
Upper Ground Floor,
Churchill Business Centre,
6 Church Hill,
Walthamstow
London E17 3AG

Tel: 020 8521 0377
Fax: 020 8521 1672

www.voluntaryaction.net